



 caesarstone®

# Whitelight Collection





# Whitelight Collection

We have a natural desire to connect with nature, to remove the barriers between us and the outside world. In particular, we have a love of stone and the strong sense of wellbeing and serenity that it can provide us.

The Caesarstone Whitelight Collection celebrates this with a suite of lighter tones and organic forms that bring the outside in, anchoring us in our surrounding world.

White brings with it a purity of both body and mind. It can be opulent or minimal but is always sophisticated.

The sense of cleanliness that comes with white stone surfaces is welcome, affording us protection and turning homes into sanctuaries.

The Whitelight Collection is made up of new forms representing the most current compositions of natural stone, and enduring classics that perfectly capture the march of time and a millennia of geological processes.

Now is the time to bathe your home in the natural warmth of Whitelight.



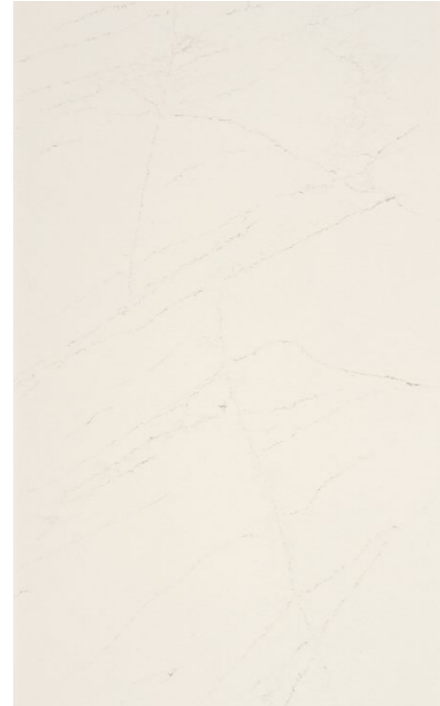


*We are all surrounded by the beauty of the natural world, we simply have to look for it. After a year of constraints on travel and movement, we should remind ourselves of how fortunate we are to have nature so close to hand. Seek it out. It is an essential element for our wellbeing.*

**MOR KRISHER**  
CHIEF DESIGNER

# New Designs

The Whitelight Collection includes four new designs that showcase the individuality and complexity of natural stone and the variety of ways in which diverse marble motifs have been interpreted to meet this highly desirable aesthetic; a style that communicates luxury, comfort and safety along with a timely connection to our external environment.



5171  
Arabetto

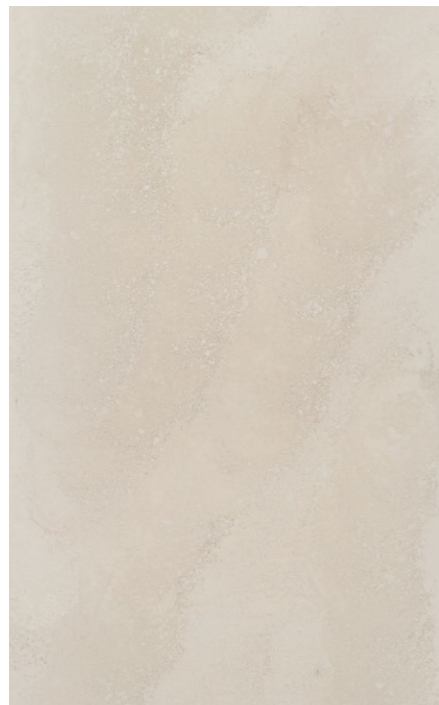
S | P/H/N | 13/20/30  
J | P/H/N | 13/20/30

5112  
Aterra Blanca

S | P/H/N | 13/20/30  
J | P/H/N | 13/20/30

5114  
Calacatta Maximus

S | P/H/N | 13/20/30  
J | P/H/N | 13/20/30

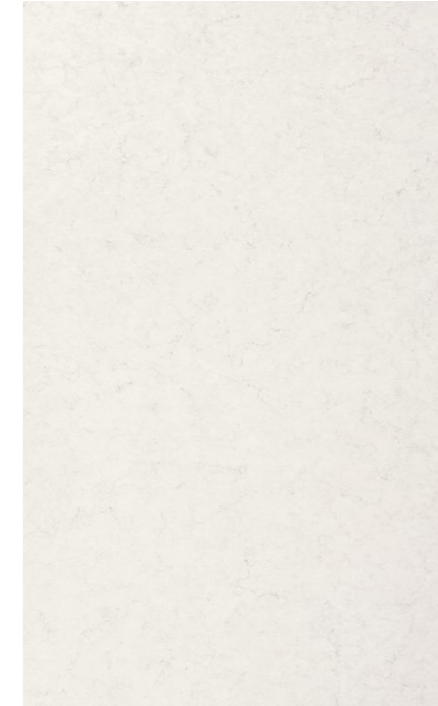


5222  
Adamina

S | P/H/N | 13/20/30  
J | P/H/N | 13/20/30

# The Classics

These five sought-after designs chronicle the decades long journey of craft and imagination that Caesarstone has taken and that serve as the foundation for the Whitelight Collection. From the subtle nuances of 4141 Misty Carrera to the luxurious veining of 5031 Statuario Maximus, each is a peerless surface that offers rich design possibilities that connect our homes to the natural world.



4141  
Misty Carrera

S | P/H/N | 13/20/30  
J | P/H/N | 13/20/30

5143  
White Attica

S | P/H/N | 13/20/30  
J | P/H/N | 13/20/30

5141  
Frosty Carrina

S | P/H/N | 13/20/30  
J | P/H/N | 13/20/30



5151  
Empira White

S | P/H/N | 13/20/30  
J | P/H/N | 13/20/30

5031  
Statuario Maximus

S | P/H/N | 13/20/30  
J | P/H/N | 13/20/30

## Finish Key

- P Polished finish
- H Honed finish
- N Natural finish

## Standard

**Length** 3050mm (nominal)  
**Width** 1440mm (nominal)

**Weight**  
20mm 189kg – 210kg  
30mm 290kg – 306kg

## Jumbo

**Length** 3340mm (nominal)  
**Width** 1640mm (nominal)

**Weight**  
20mm 236kg – 261kg  
30mm 363kg – 382kg

## Thickness

20 mm / 30 mm (nominal)

# Designing Whitelight

Caesarstone's Head of Design, Mor Krisher, describes the creative journey behind the formation of the Whitelight series.

The new additions to the Caesarstone Whitelight Collection, are a culmination of a long and winding path of lived experiences, directed imagination and human craftsmanship.

As a design team, we benefit from spectacular surroundings, from stunning desert landscapes to sheer mountain faces and archaeological reminders of classical antiquity, all within a short drive of our design facilities. We are surrounded by the beauty of the natural world, and in a year of constraints on travel and movement, we are reminded of how fortunate we are to have such inspirations so close to hand.

We endeavour to absorb ourselves in this external environment wherever possible, as the complexities of our geography provide visual cues and drive us to explore new ways in which we can design surfaces for the home that embody these influences. As we all seek a greater connection with the outside, we see the Whitelight Collection as a beacon of hope, a visual reminder of the world around us and a focal point for the very heart of our homes.

Whilst Caesarstone is regarded as the architect of engineered quartz surfaces, perhaps our greater ambition is to be renowned for our pioneering spirit.

The story of the Whitelight Collection is one that begins over a decade ago; when Caesarstone elevated quartz surfaces away from simple, flat monochromatic, almost artificial colours, into more organic designs that truly capture the essence of nature.

Central to our design philosophy is our interpretive approach of the natural world. How can the patterns, textures and movements we see in the world around us be transformed into something unique and individual? Much like no quarried slab is alike, each of the marble motifs within the Whitelight series are inimitable with their own influences and creative journeys.

Each of these surfaces is made up of our continued search for inspiration in the external environment and the delicate craftsmanship of human intervention. We take a hands-on, artisan approach to design that embraces creative experimentation and artistic exploration as we realise each surface, perfecting the exact combination of inspiration and imagination that is a hallmark of the Caesarstone brand.



Inspired by natural marbles, 4141 Misty Carrera was the first of our designs to embody this connection to the outside world. Subtle and refined in its organic appeal, it served as a forebearer to the revolutionary Supernatural Collection.

The Supernatural Collection stems from a broad set of influences. Whether it is the study of nature, such as the form of a branch or root structures in trees and plants, or an examination of the subtle variations in colour tonality that serve to draw the gazes, there is a story and design journey behind each of the surfaces.

We explore qualities from different natural stones, as well as wider materials that we are drawn to; looking for inspirations beyond the obvious, combining these often contrasting elements and working on the nuances of the design for many months until we are content with our creation. The result is a beautifully organic appearance that has no direct parallel.

This rich understanding of the subtleties of design is apparent in 5031 Statuario Maximus, a sophisticated twist on classic marble, offering the luxury and elegance one expects from a natural stone, yet with its own signature look that is unique to Caesarstone.

Followed by 5143 White Attica, a bold design that explores the movement of natural mineral strata as it swirls across raw marbles, and 5151 Empira White, an alluring portrait of stones found in ancient constructions and decor; we had created the pillars that were to act as the foundations for our newest designs in the Whitelight Collection.

5171 Arabetto, 5112 Aterra Blanca, 5114 Calacatta Maximus and 5222 Adamina; each embody this drive for design and our ethos for connecting the comfort and safety of home with the bold visuals and awe-inspiring beauty of our natural surroundings.

Individually, they are unique; collectively they offer an imaginative suite for interpreting the timeless desire for the white marbles, offering distinct design possibilities that provide both a calming refuge from the challenges of modernity and a deeper, more primal link with ancient geology that reminds us of the power of the earth.



Mor Krisher  
Chief Designer





Arabetto

5171

A swirling galaxy of dynamic grey stripes and speckles that span across a crisp white surface, capturing a complex composition of minerals in a delicate interlacing of jade and copper that thread through this impressive stone.



Arabetto captures the endless possibilities of movement and patterns in natural stones.

Arabetto creates a lasting impression. It charges the space around it, pulsating with a dynamic energy that spreads out and then back in again, to the surface. A creatively memorable combination can be made by dressing it with brushed gold or antiqued brass hardware.

Or keep it sleek with stainless steel. Black or dark cabinetry contrast its lighter shades perfectly, while off-white panels and flooring can maintain an airy feel to the room. A high-end trend for walnut furniture blends the beauty of wood with the rich grain of the stone.

Arabetto expresses Caesarstone's design passion and craftsmanship, tracing the beauty of nature in stone.





# 5171 Arabetto

The complex depths of forest green, jade and terracotta hues found in the movement of Arabetto's veining offer a foundation for a variety of colour schemes, from classical palettes built out of neutrals such as whites, greys or blacks, to more daring designs composed of bold colour and material combinations.



# Design & Colour Palettes

## 01. Monochrome tones

Ever heard of green-blacks, red-whites or blue-greys? Despite conventional perception of classical neutrals as colourless hues, these contain a variety of underlying tones. The key in creating perfect pairings lies in understanding each of the different pigments present in your chosen surface, in this case Arabetto. Before

finding a complementary neutral, consider the character of the bold veining, traversing across a warm white base. Composed of an intricate mixture of dark, earthy-greys, deep-greens and copper-coloured pigments, it will match beautifully with neutrals containing accents of those colours: look for charcoal-blacks, taupe-hued greys and off-whites.

## 02. Pinks and blush shades

Light pinks, blushes and terracotta oranges remain supremely popular colours for home interiors and have increasingly found their way into kitchen spaces. According to colour psychology, besides being easy on the eye, these warm tones are the perfect choice for both kitchens and dining rooms as they have the subconscious power to encourage appetite,

an association that is favourable for spaces that are intended for food preparation and consumption. Arabetto's coppery hints in the veining make it the perfect match for these colours. Explore beyond paint colours and delve into other materials finished in warm hues: explore different options of aged brass, terracotta tiles and coloured glass to find the right pairings.

## 03. Blue-green hues

Navy has traditionally been regarded as the perfect match for white marble. However, a new colour has emerged to challenge this classic pairing: deep emerald green. Caesarstone's new Arabetto is the flawless choice for those looking to achieve this daring look; at first its veining appears of monochromatic dark grey hue but

a closer inspection reveals its discreet accents of jade and forest green, making it especially responsive to colours on the green colour spectrum. However, the subtle blend of the green hues in the veining makes Arabetto truly versatile, allowing a beautiful match with greens, blues and greys.



# Aterra Blanca

# 5112

A misty white base that unravels with the softest strokes of earthy veining, swirling slowly into the stone that radiates a translucent glow, with warm, milky movements.

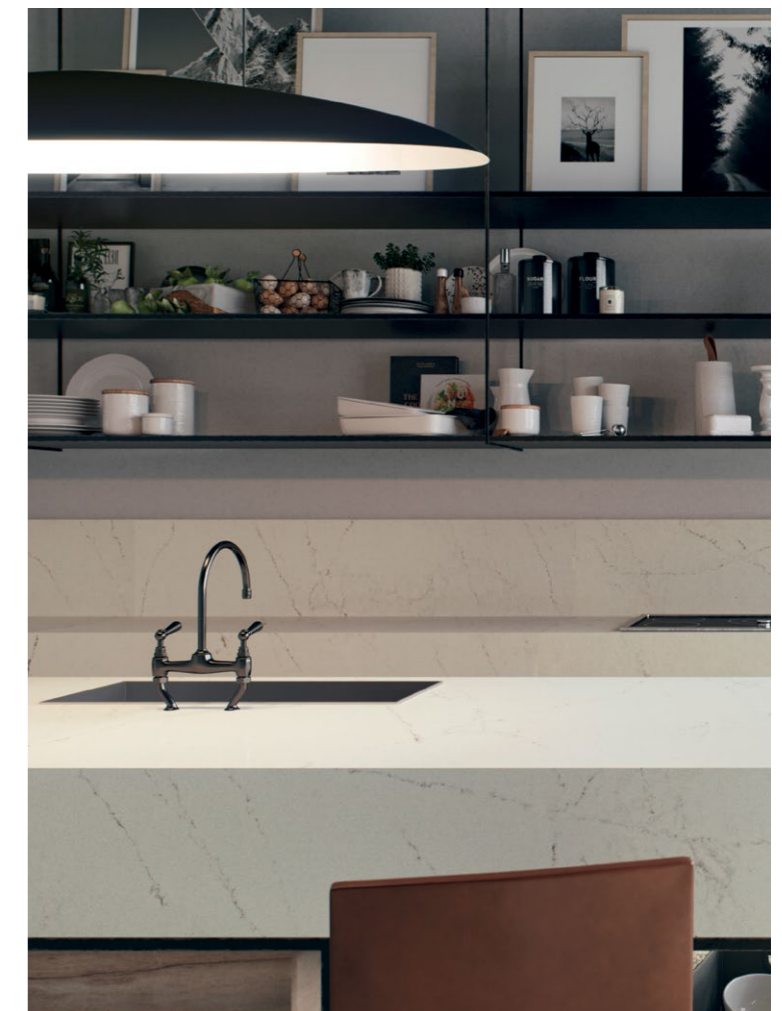


This is a surface that radiates a translucent glow, polished to bring out a special texture of warm, luminous movements that mirror its emotional depth.

The inspiration for Aterra Blanca is the refined gracefulness and strength of natural marble, which has decorated interiors for centuries.

Aterra Blanca's delicate elegance is created with Caesarstone's advanced stone innovation. It is designed for versatility, and adapted gracefully into a range of décor styles, fitting perfectly into classic, country, minimal, or sleek spaces. For a more contemporary look, Aterra Blanca blends beautifully with darker woods, such as cherry, oak, or walnut that are used on floors, cabinets, and cladding. It also complements concrete, reflecting its robust materiality, and works well with upholstered seating, highlighting pale jacquard textiles or leather for a harmonious ambience.

Aterra Blanca is a special piece of the earth brought into the home, washed in white and wrapped in the smoothness of Caesarstone's durable surface.



# 5112 Aterra Blanca

Aterra Blanca with its warm white base and subtle veining is the ultimate expression of understated elegance, pairing effortlessly with a myriad of different colours and hues.



# Design & Colour Palettes

## 01. Accents of jaded blues

The introduction of colour to an interior scheme doesn't always need to equate to the use of just one tone used throughout.

Often, a choice of analogous colours - adjacent colours on the colour wheel - used in smaller quantities, can elevate a paired-back scheme and create a unique sense

of luminosity and sophistication. Such compositions work especially well for popular colours like blue and green. Aterra Blanca will blend effortlessly with dusty shades of light blue, paired with light greens in jade undertones, sprinkled across the interiors in small accents such as vases, fabric trimmings, cupboard edges or handles, or lighting fixtures.

## 02. Soothing greens

Green, synonymous with nature, is perceived to have calming, restorative qualities, making it a popular choice for interiors. Aterra Blanca's veining presents taupe

accents which make it a gorgeous match for green colours in earthy undertones: from olive greens to khakis, silvery sages to green greiges.

## 03. The new neutrals : from beige to dark blush

In recent years leading interior designers and decorators have introduced a set of beige tonalities with blush undertones as 'New Neutrals'. A development, most probably influenced by the rise of the Millennial Pink, that offers a chance to create classical colour schemes of understated elegance whilst offering a different kind of visual interest to the traditional neutral schemes relying

on greys and plain whites. Aterra Blanca, with its warm and subtle veining, can be considered a neutral in its own right, making it the perfect foundation for timeless interior schemes. Besides beige and dusty pink paints, other beautiful pairings for Aterra Blanca can be found in materials such as pale zellige tiles, wicker finishes, grasscloth wallcoverings and stone washed linen fabrics.



# Calacatta Maximus

5114

A pure white backdrop animated by bold flashes of a soft mix of warm neutrals, highlighted by golden-copper lines that provide a lavish look.



In a smooth system of supple layers, which interact as one, a striking design is created that reflects authentic mineral strata found in nature. This stone is at once both dynamic and relaxed.

The inspiration for Calacatta Maximus is the exquisite calacatta, a natural stone that is imbued with a sense of timeless luxury and refinement. Calacatta Maximus takes on a remarkable and unique organic look, giving it a warm sensorial touch that is wrapped in a silky sheen. Its emotive design makes a strong statement about creativity and style, and paired with brushed steel or chrome accessories, its refined look is magnified. Complementary materials bring a new balance, such as oak parquet for natural understatement, concrete, which adds a sense of the industrial, or black cabinetry and tiles to contrast the stone's inner layout of hues. American walnut is a high-end alternative to white cabinetry, which promotes a warmer atmosphere, while colour blocking with bright feature walls or vivid appliances will liven up the space.

Calacatta Maximus elevates the finest white to new heights of beauty and functionality. It makes it opulent and eternal, opening up a new horizon of exploration inside the home.



Adamina

5222

Light ripples over it like a wave, whisking its neutral putty complexion into layers of taupe veiled by lush earthy sands.



The winds of time wash across this soft sandstone, recreating the tender touches of a golden dune or serene dessert. The inspiration for Adamina are the fine particles carried by the wind across great distances, only to settle and crystalize over time into a new sandstone.

Adamina is a veil of calming organic neutrals, enveloped by the subtle tactility of Caesarstone's Natural finish. It complements materials that embrace calmness in the home, working well with walls in off-white, warm grey, and beige, or tiling and cabinetry in this hushed palette. The surface blends-in with casual furniture, and flows naturally into open spaces. It can also take-on a deeper design twist, by combining it with light woods or concrete. Stainless hardware keeps the sandy surface looking clean and simple, since its down-to-earth aura makes it an ideal backdrop for a relaxed room.

Adamina is an exploration of the smallest grains of sand, which take shape together as a durable surface in which high-end innovation meets everlasting aesthetics.

# The Classics

5031  
Statuario Maximus



▲ 5151 Empira White

Timeless designs from Caesarstone offer alternate interpretations of the marble aesthetic. Initial inspiration stems from classic natural stones, then the design of each of these surfaces is elevated with motifs discovered via more esoteric influences; shadows on a wall, structures of trees and branches and ripples of water. They are reflections of our natural world.

5031 Statuario Maximus offers classic luxury, with statement grey veins against a soft white base. The complex details of the grey toned veins reveal depth and emotion.

5151 Empira White features dramatic grey veining against a brilliant, almost luminescent white base, flowing across the width of surface. 5151 Empira White is perfect for applications combining a horizontal and vertical surface, where the contrasting veins flows across the worktop and onto the full height backsplashes or down the waterfall end of a statement kitchen island.

For a more nuanced yet equally aspirational take on the marble trend, 5141 Frosty Carrina features a creamy warmth in its ivory-white base, and subtle powdery vein details that define it as a true Caesarstone classic.

▼ 5141 Frosty Carrina





▲ 5143 White Attica



◀ 4141 Misty Carrera

The dense, interwoven veining of 5143 White Attica has a chameleonic hue, with nuanced blue, green grey and brown tones, that alongside the light, bright base, makes it ideally suited for a range of complementing colour schemes.

4141 Misty Carrera's design features an off-white base and a delicate vein pattern that delivers a refined interpretation of the marble trend. Reminiscent of classic Italian marbles, Misty Carrera is perfect for pared back interior schemes.

The combination of these classic surfaces and newly launched designs within the Caesarstone portfolio offers homeowners, designers and specifiers freedom to explore the breadth of the marble aesthetic, bringing to life this most desired of styles.





5151  
Empira White

**Consider the island form**

Prominent veining can serve to soften monolithic statement kitchen islands or full height splashbacks and create visual reminders of our external environment. Straight edges and sharp lines can appear overly sterile, so organic features, as found in 5151 Empira White or 5031 Statuario Maximus, help to create a more homely, balanced aesthetic.



▲ 5031 Statuario Maximus

▼ 5031 Statuario Maximus

# The Timelessness of White Marbles

White marble has been one of the most sought-after stone finishes for a thousand years and its natural qualities continue to be highly prized today. With the Whitelight Collection, we share our love of marble with you along with ideas and inspiration to using this wonderful material in your own home.

Regarded as a signifier of opulent luxury, marbles now serve as a more grounded connection to nature, with organic veining and neutral base colours seen as an antidote to the sterility of more uniform surfaces.

Across the Caesarstone range, veining now comes in a wide range of variations, from the delicacy of intricately laced lines to the dynamic drama of oversized thicker veining, facilitating a range of design possibilities.

The stunning visual appeal of marbles continue to elevate our home interiors. The nature of white marble designs in particular, acts as a calming moment of serenity in the home; an escape or moment of bliss, with the veining providing us with a connection to the earth and the outdoors while the white base points to brighter horizons.

This exploration of the marble trend in our portfolio mirrors the journey behind the products' design - an examination of the aesthetic beyond the obvious. Just as no two quarried stones are exactly alike, each of our marble designs offers their own characteristics that serve to elevate a broader design scheme.

**Cohesive accessories**

The style of your kitchen project can start with the worktop, taking inspiration from your preferred Caesarstone design. Extend the surface beyond the countertop across shelving, windowsills and table tops for a harmonious look. Dress with foliage that mirrors the natural movement and characteristics of the vein design and use contrasting tones, such as dark, solid coloured cookware that offer a counterpoint to the white stone.



▼ 5171 Arabetto





5141  
Frosty Carrina



### Statement splashbacks

If you've fallen in love with marble and have decided to make it a feature in your space, consider using it for both work surfaces as well as for full height splashbacks that run to the length and height of wall cabinetry, creating a powerful visual statement.



### Mixed material islands

If you aspire to a statement kitchen island, then consider waterfall edges, which sees the sides of the island clad in matching stone that allows the dramatic vein pattern flow seamlessly to the floor. Marble's timelessness makes it an effortless match for all tones of natural woods, metals or tiles.

▲ 5031 Statuario Maximus

▼ 5143 White Attica



**Some variation in colour and pattern can occur. We always recommend viewing a full slab or product installation as part of your colour selection process.**

Virtually maintenance free, Caesarstone's hard, non-porous surfaces are simple to clean and require no sealing to renew their lustre. In most cases, soap and water or a mild detergent is enough to keep your Caesarstone surfaces looking like new. If necessary, you can use a non-abrasive soft soap along with a non-scratch or delicate scrub pad. Afterwards, thoroughly rinse with clean water to remove residue. Please note that Caesarstone finishes other than polished may require increased daily maintenance due to their distinctive appearance.

**For added peace of mind, Caesarstone products come with a 3-year limited Warranty**

#### **Quality and service**

Caesarstone has received worldwide recognition for its commitment to quality, safety and environmental standards. Each one of our surfaces is carefully inspected to ensure that it meets the highest level of international quality standards. Our surfaces come with a warranty on domestic installations and are backed by professional customer service and support.



ISO 9001:2015  
ISO 14001:2015



**We'd love to hear from you. For more design ideas, queries and for your local distributor, visit our website:**  
[www.caesarstone.com](http://www.caesarstone.com)

Caesarstone 2021  
Caesarstone is a registered trademark

